

2 T800-55-0000 Backplane PCB

The T800-55-0000 paging backplane PCB is designed for use in the T800-28-0X00 paging rack frame. The PCB mounts across the rear panel of the T800-41-0003 triple module rack frame guide, and has provision for the following modules:

- high stability oscillator
- repeater/link receiver (optional)
- paging exciter/transmitter (25, 50 or 100W).

These modules plug directly into the D-range sockets provided on the inner side of the PCB (both D-range 1 and D-range 2 are provided for). The other side of the PCB features:

- a programming port
- two DIP switches for external channel selection
- one 25-way OEM D-range connector (refer to Figure 2.1)
- one 11-way D-range connector with provision for an external frequency reference.

The T800-55-0000 also allows the fitting of an optional link transmitter/repeater, but will not accept personality PCBs.

Pin	Function
1	Rx line 1
2	Rx aux 2
3	Rx aux 1
4	Rx line 4
5	Tx line 1
6	POCSAG data
7	lock detect
8	Tx line 4
9	signal strength (RSSI)
10	speaker +ve
11	Tx tone input
12	reverse power alarm
13	0V
14	Rx gate
15	Tx key
16	Rx relay common
17	Rx relay normally open
18	Rx inhibit
19	Data/speech (mode select)
20	opto key +
21	opto key -
22	forward power alarm
23	
24	Rx audio 1
25	13.8V (fused)

Figure 2.1 T800-55-0000 PL1 Wiring

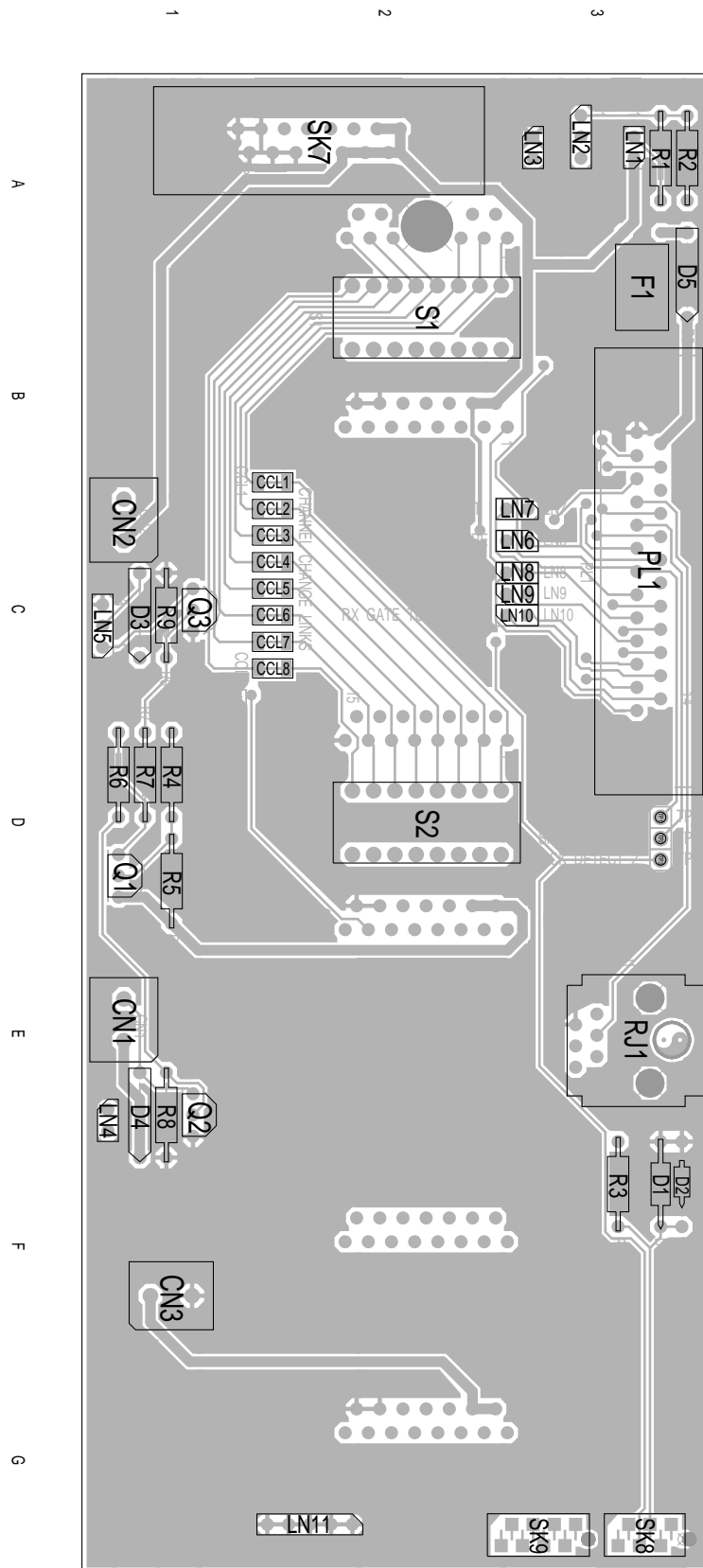


Figure 2.2 T800-55-0000 PCB Layout - Top Side (Outer)

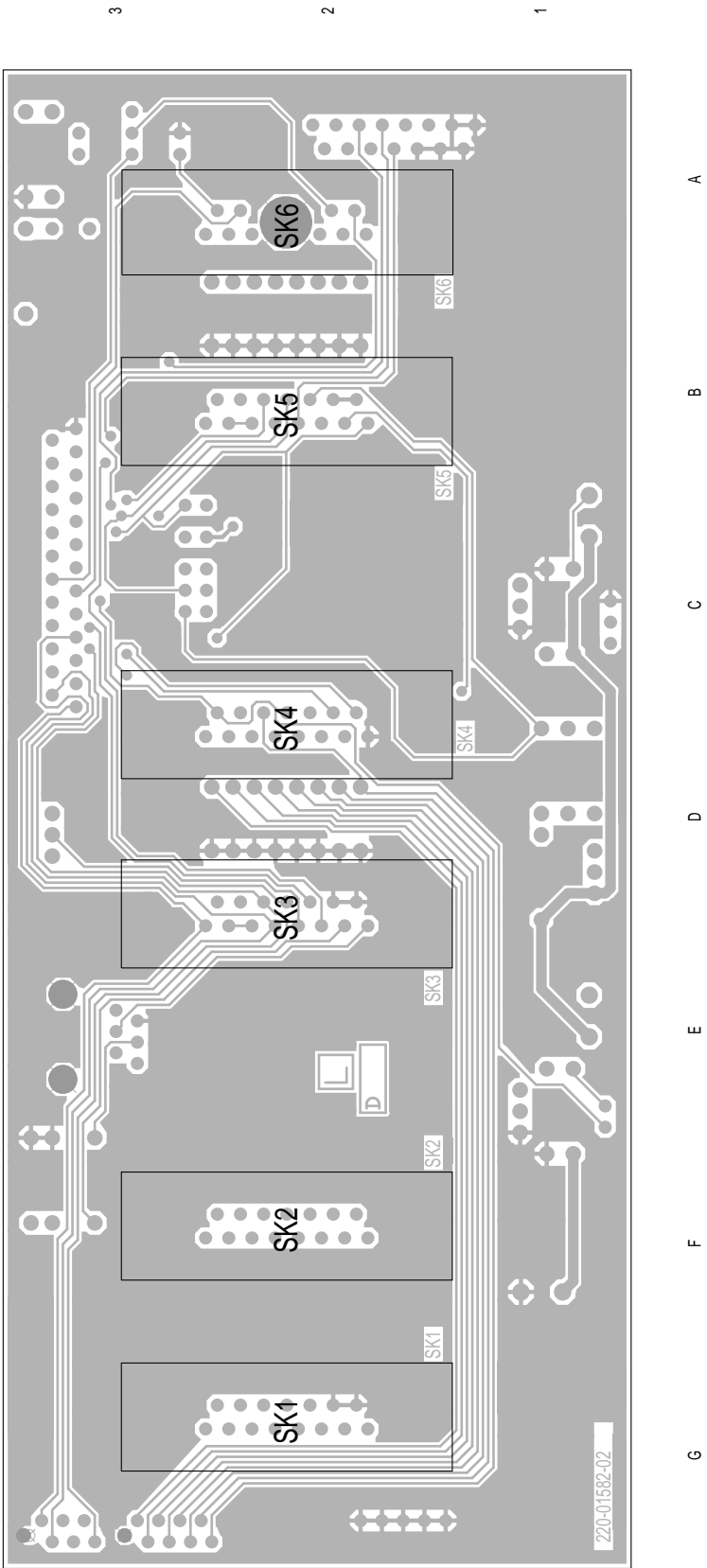


Figure 2.3 T800-55-0000 PCB Layout - Bottom Side (Inner)